

Facility: Riverside (Formally Langevin)

Last Updated: April 8
2026
Who: JA

Address: 107 6A Street NE

Contact/Caretaker:

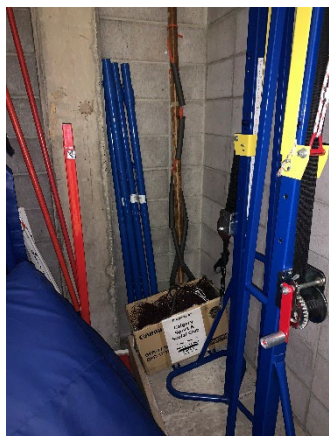


Photo #1

General Information

Parking: Players may **NOT** park in any reserved parking stall **AT ANY TIME**. Players can park in either the compound on the South side of the school or in the staff parking lot across 1st Avenue.

Entrance: Players can enter from the main entrance on the North side of the building or the side doors on the South side off the compound parking area.

Gym Location: Inside the main entrance follow the hall straight down and the gym will be on the right near the back of the school. Inside the side entrance, the gym will be just to the left.

Change room/Washroom: Players are to use the washrooms located behind the stage. We are not permitted entry or use of the locker rooms in this facility.

Floor:

Equipment

Sport Specific Equipment Location and details: The Badminton nets and posts will be put out on the stage by school staff prior to our bookings. If they are not put out, the equipment will be located in the gym divider closet. The closet is traditionally locked and the EC will need to find a caretaker to gain entry.

Gym Set-up

Badminton

Step 1: There are 4 Badminton Posts in the divider closet. All 4 are blue in colour. There are two end posts (have D rings on one side) and two middle posts (have D rings on both sides).

Step 2: Place end posts into the two end post holes, and place middle posts into the two middle post holes.

Step 3: Get Badminton nets from the closet. The nets are not specific to what courts they should be placed on. Attach nets to posts by clipping carabiners on ends of nets to the top D rings on each post.

Step 4: To achieve desired tension, twist the end posts to tighten the nets separately.



PLEASE ENSURE THE NETS GO NEATLY BACK IN THE BOX AND THE BOX AND POSTS ARE STORED NEATLY AT THE BACK OF THE DIVIDER CLOSET AT THE END OF THE NIGHT.

Important Notes

- Doors will be locked 15 minutes after start of permit time. Please DO NOT prop doors open at any time, we have received an official complaint. Players should use the doorbell and be let in between games by other players or the GC.
- Players should not wander the halls.
- Please do a scuff test to ensure all shoes are non-marking. We have received an official complaint about marks left on the floor after our group.
- Please ensure games are ended on time and all players are out of the facility before our permit end time.

