

Facility: GW Skene

Last Updated: Mar 3, 2026
Who: JB

Address: 6226 Penbrooke Dr SE, Calgary, AB T2A 6M7

Contact/Caretaker: Mr. Dang

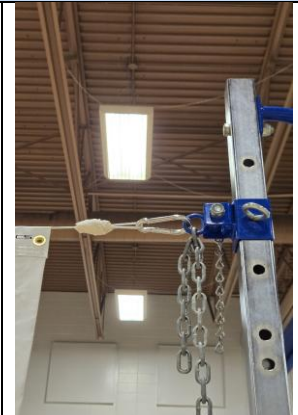
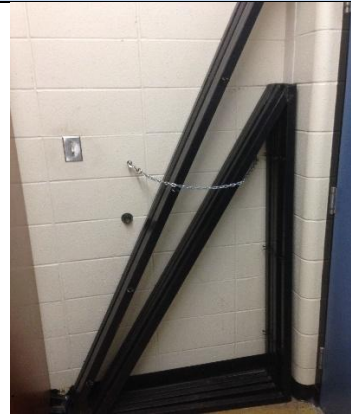


Photo #1

Photo #2

Photo #3

Photo #4

General Information

Parking: Parking is available in the staff lot to the west of the School, or on the street in front (South) of the school.

Entrance: Enter through the side doors next to the staff parking lot on the west side of the school. Ring the doorbell if doors are locked.

Gym Location: Once in the doors, the gym will be on the left.

Change room/Washroom: Washrooms are available across the hall of the main doors to the gym.

Floor: The gym is on the main floor.

Equipment

Sport Specific Equipment Location and details:

Posts: There are 2 red and 2 blue high school caliber posts with straps.

Postholes: Use the post holes that are closest to the yellow sidelines.

Court Lines: The lines are yellow all around.

Nets: The CSSC owns the nets, and they are stored in a brown cabinet in the equipment room (along the right side) and are inside a blue plastic bin. Our nets say "Property of CSSC" on them and are labeled. **The two nets are specific to the posts. The net for the blue posts, and red posts are labeled "blue" and "red".**

Gym Set-up

Volleyball

Step 1: The two blue posts go together, and the two red posts go together. Place the posts in the post holes that are closest to the yellow sidelines.

Step 2: Adjust the sleeve on the posts to the second hole from the top. For the red posts, since there are two cranks on each post you may have to spin one of the posts so that one post cranks high and the other post cranks low.



www.CalgarySportsClub.com
Unit 180 - 4411 6th Street SE, Calgary, AB, T2G 4E8
403-244-PLAY(7529)

Step 3: Each net has a cable loop or a carabiner on all 4 corners. Attach the top of one corner of the net to the s-hook on the top of the post and the other top corner to the s-hook on the strap.

Step 4: Repeat for the bottom of the net, but the strap and crank will be on the opposite side. As per photo #4, attach the carabiner directly to the post loop, ignore the chain on the top of the blue posts.

Step 5: Tighten the net on the top and bottom using the crank wheel. **DO NOT OVER-TIGHTEN!!!**

Basketball

Court Lines: Black all around

Player Benches: Players can sit on the large benches against any wall, outside of the area of play.

Soccer

The frames are stored behind the equipment room door against the wall. **PLEASE MAKE SURE TO PUT THE FRAMES BACK EXACTLY AS THE PHOTO BELOW SHOWS THEM.** This room may be locked, so you may have to find the caretaker to unlock the door. ALL EQUIPMENT MUST BE RETURNED INTO THE PROPER PLACE AT THE END OF EACH NIGHT. THE CARETAKER HAS VERY SPECIFIC EXPECTATIONS.



Don't drag the nets across the floors as they will scratch the hardwood.

Outdoor soccer balls are strictly prohibited – even in the hallway or for warm-ups.



Important Notes

Make sure that the lunch tables that are stored in the equipment room are left in that room at all times!!! Keep the equipment room as tidy as possible. RETURN ALL EQUIPMENT TO ITS PROPER PLACE. Soccer balls can be kept in the CSSC cardboard box in the brown cabinet.

PLEASE RETURN THE SOCCER FRAMES BEHIND THE DOOR OF THE STORAGE ROOM. BE SURE TO SECURE THEM WITH THE CHAIN EXACTLY AS DISPLAYED IN THE PHOTO ABOVE.

When leaving this gym, please follow these instructions 100%, and use the pictures as a guideline on the next page:

1. Put the box with the nets in the top middle brown cabinet, do not leave on the floor.



2. Posts: There are holes in the floor, please line them up 2 in each row. Start in the far left corner, 2 in the front 2 in the back. Do not put 3 across the front or else you will block the tables



← As shown here, there are 4 post holes in the front row. Do not use the 2 right side holes that are in the floor. They block the tables and make it harder to get them out.

When you first enter the equipment room look to the left, in that front corner is where the posts are stored.



Make sure that the black posts in behind our VB posts are also put away properly, EXACTLY as shown in the background of the above

3. Make sure that only 2 sets of tables are in the little hallway just to the right of the equipment room



4. Do not jam the tables in, it is a pair of elderly women who bring them out every day for the kids. Make sure they are easy to move and not blocked by anything in anyway.
5. Make sure to do a round of the gym to make sure nothing is left behind, if there are kids' items, please just pile them on a bench nicely.
6. Find the night caretaker and double check with them that everything looks good and is up to their standards.

When you are done, the equipment room should look like this:



Please place nets and posts back to original location. The lighting in this gym is not ideal, but the CSSC is aware of this issue.

2015: Please make sure that the black posts that are behind ours are kept properly. There should be 2 black in the outer holes in the floor, and the rest of the black posts should be laying down in-between them and the wall





www.CalgarySportsClub.com
Unit 180 - 4411 6th Street SE, Calgary, AB, T2G 4E8
403-244-PLAY(7529)