

Facility: Thorncliffe Community Association

Last Updated: 01/29/2026
Who: JB

Address: 5600 Centre St N, Calgary, AB T2K 0T3

Contact/Caretaker: Thomas Taverner

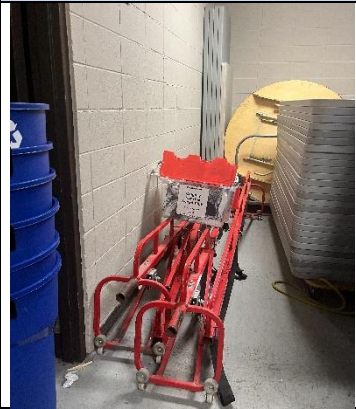


Photo #1



Photo #2



Photo #3

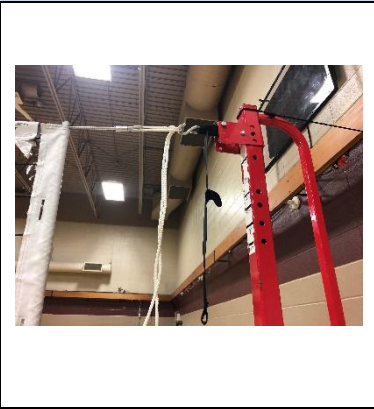


Photo #4

General Information

Parking: Parking is available on the SW side of the building or behind the building on the east side.

Entrance: Players may use the main entrance on the SW side of the building, or enter through the back door on the East side of the building.

Gym Location: Once in the facility, the gym is located in the Southeast corner of the building. On the left if you enter from the east, on the right if you enter from the west.

Change room/Washroom:

Floor: Wood floor.

Equipment

Sport Specific Equipment Location and details:

Volleyball

Posts: There are 4 red volleyball posts and volleyball nets in the equipment room at the far end of the gym.

Postholes: Use the post holes that are in line with the red volleyball centre line on each court.

Court Lines: Volleyball lines are red.

Nets: The nets are owned by the CSSC and are in a bin with a red lid labeled so, and should be with the posts. (If they are not with the posts, they are likely under stacks of chairs. (As seen in Photo #3))

Gym Set-up

Volleyball

Step 1: Posts are labeled with either "middle" or "wall" this is how posts should be set up, but may be assembled before you arrive.

Step 2: The nets are not assigned to a specific court, attach the top of the net first, then the bottom

Step 3: Tighten the net on the top and bottom using the crank wheel. **DO NOT OVER-TIGHTEN!!!**

Step 4: There are cranks on the walls adjacent to the posts, these are used to maintain the tension on the nets. Attach the rope to the top of the post and tighten.



www.CalgarySportsClub.com
Unit 180 - 4411 6th Street SE, Calgary, AB, T2G 4E8
403-244-PLAY(7529)

Pickleball

Equipment:

Pickleball nets are stored in bags along the west side of the room. Instructions should accompany the bags for set-up.

Thornccliffe will often have the Pickleball nets set up for us in advance. If the nets are not set up in advance, please be sure to take them down and put them away at the end of the session.

Important Notes

